

INSTALLATION GUIDE

CONTENTS

Important Notes for DC1000 Users	2
Getting Started	3
Installing the Design Center Software on a PC	4
Upgrading the Design Center Software	6
Connecting the Cutout Maker to a PC	8
Adding VariQuest Devices after Initial Installation	9
Using the DC1000 with a PosterPrinter 3000 & Parallel Connection	10



Copyright 2007 Brady Worldwide, Inc.
All Rights Reserved
BRADY WORLDWIDE, INC.
6835 Winnetka Circle, Brooklyn Park, MN 55428
Phone (763) 536-6400



IMPORTANT NOTES FOR DC1000 USERS

For NEW Users:

- If you have just acquired the VariQuest™ Design Center 1000 Touch Screen system (DC1000), you do **not** need to install the software provided on this CD before using the system. All software, drivers, and utilities have already been loaded on the DC1000 for you.

For EXISTING Users:

- If you already have a DC1000 and wish to either upgrade to the latest version or add a VariQuest device to your DC1000, use the accompanying CD to install the upgrade/addition.

For ALL Users:

Be sure to insert the VariQuest Design Center Software CD into the **internal** (built-in) CD-ROM drive of your PC or DC1000. The software will not install from an external drive (one attached via a cable to the computer).

Getting Started

VariQuest™ Design Center Software is one component of the **VariQuest™ Visual Learning Tools** product line, which supports school staff members and volunteers in creating materials that help improve student and staff performance.

The VariQuest Design Center Software CD that accompanies this guide will perform a number of tasks, depending on the machine you use for the software, and whether the software is a new or an existing installation. This **Installation Guide** steps you through each of these tasks.

To determine which sections of this guide meet your specific requirements, use the following chart, which lists:

- Each **procedure** in this guide
- Which **install type** the procedure is for—new (first-time) software installations, upgrades, or adding an output device
- Which **machine type** you use to run the Design Center Software—the dedicated VariQuest™ Design Center 1000 Touch Screen (DC1000), or your PC

When to Use the *Installation Guide* Procedures

Procedure	Install Type	Machine Type
Installing the Design Center Software on a PC: See page 4	New Install	User PCs
Upgrading the Design Center Software: See page 6	Upgrade Install	DC1000s User PCs
Connecting the Cutout Maker to a PC: See page 8	New Install Upgrade Install Device-Only Install	User PCs
Adding VariQuest Devices After Initial Installation: See page 9	Device-Only Install	DC1000s User PCs
Using the DC1000 with a PosterPrinter 3000 & Parallel Connection: See page 10	New Install Upgrade Install Device-Only Install	DC1000s

Installing the Design Center Software on a PC



APPLIES TO:

- **New Install only**
- **User PCs only**

Depending on whether you have an existing version of the Design Center Software installed on your PC, the installation program will perform either a new, full install or an upgrade install. The following steps apply to a **new installation**. (See “*Upgrading the Design Center Software*” on page 6 for the steps involved in an upgrade.)

1. Insert the VariQuest Design Center Software CD into your PC’s **internal** CD-ROM drive. The setup program should start up automatically. If it doesn’t, take these steps:
 - Open your Windows **Start** menu.
 - Click **Run...**
 - In the **Open** text box, type: **D:\variquestinstaller.exe** where “**D**” = your CD-ROM drive.
 - Click **OK**.

2. When the Design Center Software welcome screen appears, click the option **New Install**.

NOTE: If the Microsoft .NET framework is not currently installed on your PC, the setup program will install that first. When .NET installation is complete, you will be prompted to restart your PC. Then continue with step 3.

3. The **InstallShield Wizard** will launch. Click **Next** to begin installation.
4. When the **License Agreement** screen appears, read the agreement in the window. Click the scroll bar to read the entire text. If you agree to the terms, click **Yes**.
 - If you click **No**, you will not be able to proceed with installation.
 - If you click **Back**, you will be returned to the previous screen.
 - To print out the entire agreement, click **Print**.

5. On the **Select Options** screen, a list of VariQuest and PosterPrinter output devices will appear. Click the checkbox next to each device you will be connecting to your system.
6. When done selecting devices, click **Next**.
7. The **Choose Destination Location** screen will show the **Destination Folder** where the Design Center Software files will be installed. You can change the location by clicking the **Browse** button and then selecting a different folder. It is recommended that you accept the default folder.
Click **Next** to continue.
8. The **Start Copying Files** screen will appear, listing the output devices you selected earlier. If the list is accurate, click **Next** to continue. (To add or remove items from the list, click **Back**.)
The installation process will begin, and the **Setup Status** screen will show a progress bar while installing.
9. The **Printer Setup** program will now install each of the devices you selected in step 5.
10. The **InstallShield Wizard** will display a message when installation is complete and ask if you want to restart your computer. You must restart your PC before using the Design Center Software. If you want to restart it now, select **Yes** to restart, and click **Finish**. (If you select **No**, you must still click **Finish** to complete the installation process, and then restart your PC at a later time.)
11. After the software and all device drivers are installed, you must launch the Design Center Software and perform a one-time procedure to complete the initial installation tasks. Refer to the *VariQuest Design Center Software User's Guide* for instructions on launching the software and completing the initial setup.

Upgrading the Design Center Software



APPLIES TO:

- Upgrade Install *only*
- Both DC1000s and User PCs

This procedure steps you through the process of upgrading your existing Design Center Software to a newer version. The upgrade process is the same for both DC1000s and PCs.

1. Insert the VariQuest Design Center Software CD into your PC's *internal* CD-ROM drive. The setup program should start up automatically. If it doesn't start, take these steps:
 - Open your Windows **Start** menu.
 - Click **Run...**
 - In the **Open** text box, type: **D:\variquestinstaller.exe**
where "**D**" = your CD-ROM drive.
 - Click **OK**.
2. When the Design Center Software welcome screen appears, touch or click the option **Upgrade Install**.
3. The **InstallShield Wizard** will launch, and display a message informing you that the setup program will upgrade your existing software. Touch or click **Yes** to continue.
4. When the **Resuming Installation** screen appears, touch or click **Next**.
5. The install program will now upgrade your existing software and its databases. You will see a progress bar during this process. Please be patient—the process could take some time as all databases are updated.
6. When the software is updated, the install program will display a list of VariQuest output devices already installed on your system, as well as those you currently do *not* have installed. In this step, the install program will update your existing devices *and* install any new devices you choose.
To install additional devices, touch or click the device(s) you wish to install.

NOTE: If a previously installed device cannot be automatically updated, the install program will prompt you to delete the existing device driver, and will then install the new, updated driver. If you are prompted to do so, follow this procedure:

- a) Touch or click the **Printers & Faxes** button.
 - b) When the **Printers and Faxes** window appears, select the devices whose drivers you wish to delete.
 - c) Select the **File** menu and the **Delete** option.
 - d) Close the **Printers and Faxes** window.
7. When you're ready to proceed with the device updates, touch or click **Next**.

NOTE: During this process, the install program will update existing devices and install the new ones you selected. Your screen may change several times as each driver is installed.

8. The **InstallShield Wizard** will display a message when installation is complete and ask if you want to restart your computer. You must restart your PC before using the Design Center Software. If you want to restart it now, select **Yes** to restart, and click **Finish**. (If you select **No**, you must still click **Finish** to complete the installation process, and then restart your PC at a later time.)

Connecting the Cutout Maker to a PC



APPLIES TO:

- **New Install, Upgrade Install, and Device-Only Install**
- **User PCs only**

The VariQuest Design Center Software makes it easy to install and use any of the VariQuest output devices. Most of the devices can be connected to your PC without requiring any additional steps. Whenever you first connect the Cutout Maker to a specific USB port, however, you will need to take a few steps in the Windows **Found New Hardware Wizard**.

(**NOTE:** The wizard will also appear if you connect the Cutout Maker to a different USB port than previously used on the same computer.)

1. After you connect the Cutout Maker's cable to a USB port on your PC, the **Found New Hardware** window will appear with three choices. Click the bottom choice — **No, not this time** — and then click **Next**.
2. As prompted, if your Design Center Software CD is not already inserted, place it in your PC's CD-ROM drive now.
3. On the same screen, click the second option — **Install from a list or specific location (Advanced)** — and then click **Next**.
4. When the hardware wizard asks you to choose your search and installation options, select the top option — **Search for the best driver in these locations** — and then click the option to **Search removable media (floppy, CD-ROM...)**.
5. Click **Next** to begin the installation.
6. When the **Completing the Found New Hardware Wizard** screen appears, click **Finish**.

NOTE: For other VariQuest output devices, Windows will automatically install the drivers. You may momentarily see Windows "balloons" appear in the lower right corner of your screen, telling you the hardware has been found and installed.

Adding VariQuest Devices After Initial Installation



APPLIES TO:

- **Device-Only Install**
- *Both DC1000s and User PCs*

You can always add more VariQuest devices after the software is installed. To add another device:

1. Insert the VariQuest Design Center Software CD into the *internal* CD-ROM drive of your PC or DC1000. The setup program should start up automatically. If it doesn't start, take these steps:
 - Open your Windows **Start** menu.
 - Click **Run...**
 - In the **Open** text box, type: **D:\variquestinstaller.exe** where “**D**” = your CD-ROM drive.
 - Click **OK**.
2. When the installation menu appears, touch or click the option **Device-Only Install**.
3. From the list that appears on the **Select Printer** screen, touch or click to highlight the device you are adding.
4. Touch or click **OK**. The **Printer Setup** program will now install the device you selected in step 3.
5. After installing the new device, the **Printer Setup** program will display a completion message and ask if you want to reboot your PC now. Select **Yes**, and click **Finish**.

NOTE: You can choose to reboot later, but you will not be able to use your newly installed device until your PC has been rebooted.

Using the DC1000 with a PosterPrinter 3000 & Parallel Connection



APPLIES TO:

- **New Install, Upgrade Install, and Device-Only Install**
- **DC1000s only**

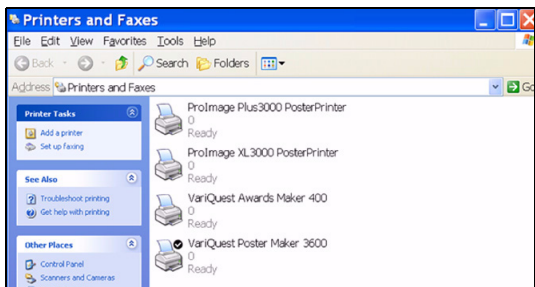
The VariQuest Design Center 1000 Touch Screen (DC1000) is configured by default to connect to the PosterPrinter 3000 series printers via a USB connection. If your printer is not equipped with a USB connector, you will need to configure your DC1000 to connect to the printer via a parallel (LPT) connection

1. On the DC1000 Touch Screen, close the Design Center Software if it is currently running. (Select the **Exit** tab, then choose the **Close VariQuest Software** option.)
2. Physically connect the printer to your DC1000, and turn it on. At some point after you turn on the device, Windows will recognize the new device and launch the **Found New Hardware** wizard. Select **Cancel** to quit that wizard — it is not needed for your printer.

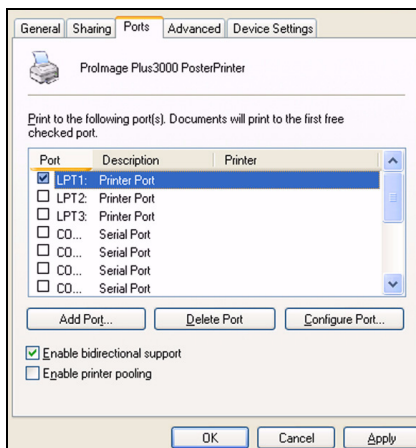
NOTE: The **Found New Hardware** wizard may take some time to appear. Regardless of when it appears, be sure to cancel out of the wizard.

3. Open the **Start** menu and touch **Settings**, then **Printers and Faxes**.
4. In the **Printers and Faxes** window, select your PosterPrinter device.

NOTE: If your printer indicates **Offline**, check the printer status. In the **Printers and Faxes** window, select your PosterPrinter device to open the printer dialog window. Touch **Printer** and then **Use Printer Online**. When the status changes to **Ready**, the printer is ready to be used.



5. Select the **File** menu, then **Properties**.
6. In the printer **Properties** dialog box, select the **Ports** tab.



7. Select the LPT port to which you connected the printer in Step 2, then select **OK** to close the printer **Properties** dialog box.
8. Close the **Printers and Faxes** window.
9. Restart the VariQuest Design Center Software by touching the VariQuest icon on the DC1000 desktop.

