



Installation Guide

CONTENTS

Important Notes for DC1000 Users	2
Getting Started	3
Installing the Design Center Software on a PC	4
Upgrading the Design Center Software	6
Connecting the Cutout Maker to a PC	8
Adding VariQuest Devices after Initial Installation	9
Using the DC1000 with a PosterPrinter 3000 & Parallel Connection	10



Important notes for DC1000 users

For NEW Users:

- If you have just acquired the **VariQuest™ Design Center 1000** Touch Screen system (DC1000), you do **not** need to install the software provided on this CD before using the system. All software, drivers, and utilities have already been loaded on the DC1000 for you.

For EXISTING Users:

- If you already have a DC1000 and want to either upgrade to the latest version or add a **VariQuest™** device to your DC1000, use the accompanying CD to install the upgrade/addition.

FOR ALL USERS:

Insert the VariQuest Design Center Software CD into the **internal** (built-in) CD-ROM drive of your PC or DC1000. The software will not install from an external drive (one attached via a cable to the computer).

Getting Started

VariQuest™ Design Center Software is one component of the **VariQuest™ Visual Learning Tools** product line, which supports school staff members and volunteers in creating materials that help improve student and staff performance.

The **VariQuest™ Design Center Software** CD that accompanies this guide will perform a number of tasks, depending on the machine you use for the software, and whether the software is a new or an existing installation. This **Installation Guide** steps you through each of these tasks.

To determine which sections of this guide meet your specific requirements, use the following chart, which lists:

- Each **procedure** in this guide.
- Which **install type** the procedure is for: new (first-time) software installations, upgrades, or adding an output device.
- Which **machine type** you use to run the *Design Center Software*—the dedicated **VariQuest™ Design Center 1000 Touch Screen (DC1000)**, or your PC

When to Use the *Installation Guide* Procedures

Procedure	Install Type	Machine Type
Installing the Design Center Software on a PC , page 4	New Install	User PCs
Upgrading the Design Center Software , page 6	Upgrade Install	DC1000s User PCs
Connecting the Cutout Maker to a PC , page 8	New Install Upgrade Install Device-Only Install	User PCs
Adding VariQuest™ Devices after Initial Installation , page 9	Device-Only Install	DC1000s User PCs
Using the DC1000 with a PosterPrinter 3000 & Parallel Connection , page 10	New Install Upgrade Install Device-Only Install	DC1000s

Installing the Design Center Software on a PC



Depending on whether you have an existing version of the Design Center Software installed on your PC, the installation program will perform either a new, full install or an upgrade install. The following steps apply to a **new installation**. (See “*Upgrading the Design Center Software*” on page 6 for the steps involved in an upgrade.)

1. Insert the **VariQuest™ Design Center Software** CD into the **internal** CD-ROM drive on your PC. The setup program should start up automatically. If it doesn't:
 - Open your Windows® **Start** menu and click **Run....**
 - In the *Open* text box, type: **D:\variquestinstaller.exe** where “**D**” = your CD-ROM drive.
 - Click **OK**.
2. When the *Design Center Software* welcome screen appears, click the option **New Install**.

Note: If the Microsoft .NET framework is not currently installed on your PC, the setup program will install that first. When .NET installation is complete, you will be prompted to restart your PC. Then continue with step 3.

3. From the **InstallShield Wizard** window, click **Next** to begin installation.
4. When the **License Agreement** screen appears, read the agreement in the window. Click the scroll bar to read the entire text. If you agree to the terms, click **Yes**.
 - If you click **No**, you will not be able to proceed with installation.
 - If you click **Back**, you will be returned to the previous screen.
 - To print out the entire agreement, click **Print**.

5. On the **Select Options** screen, a list of **VariQuest™** and PosterPrinter output devices will appear. Click the checkbox next to each device you want to connect to your system.
6. When done, click **Next**.
7. The *Choose Destination Location* screen will show the **Destination Folder** where the *Design Center Software* files will be installed. You can change the location by clicking the **Browse** button and then selecting a different folder. It is recommended that you accept the default folder. Click **Next** to continue.
8. The *Start Copying Files* screen will appear, listing the output devices you selected earlier. If the list is accurate, click **Next** to continue. (To add or remove items from the list, click **Back**.) The installation process will begin, and the *Setup Status* screen will show a progress bar while installing.
9. The *Printer Setup* program will now install each of the devices you selected in step 5.

Note:The *InstallShield Wizard* will display a message when installation is complete and ask if you want to restart your computer. You must restart your PC before using the *Design Center Software*.

10. To restart your PC now, click **Yes** and then click **Finish**. (If you click **No**, you must still click **Finish** to complete the installation process and restart your PC at a later time.)
11. After the software and all device drivers are installed, you must launch the *Design Center Software* and perform a one-time procedure to complete the initial installation tasks. Refer to the **VariQuest™ Design Center Software User's Guide** for instructions on launching the software and completing the initial setup.

Upgrading the Design Center Software



APPLIES TO:

Upgrade Install only
Both DC1000s and User PCs

This procedure steps you through the process of upgrading your existing *Design Center Software* to a newer version. The upgrade process is the same for both DC1000s and PCs.

1. Close all open **VariQuest™** software applications and disable your screensaver, if active.
2. Insert the **VariQuest™ Design Center Software** CD into the **internal** CD-ROM drive on your PC. The setup program should start up automatically. If it doesn't start:
 - a. Open your Windows® **Start** menu and click **Run...**
 - b. In the *Open* text box, type: **D:\variquestinstaller.exe** where "**D**" = your CD-ROM drive.
 - c. Click **OK**.
3. From the *Design Center Software* welcome screen, touch or click the option **Upgrade Install**.
4. The **InstallShield Wizard** will launch and display a message informing you that the setup program will upgrade your existing software. Touch or click **Yes** to continue.
5. From the **Resuming Installation** screen, touch or click **Next**.

Note: The install program will upgrade your existing software and its databases. A progress bar will display during this process. Please be patient—the process could take some time as all databases are updated.

6. When the software is updated, the install program will display a list of **VariQuest™** output devices already installed on your system, as well as those you currently do **not** have installed. In this step, the install program will update your existing devices **and** install any new devices you choose. To install additional devices, touch or click the device(s) you want to install.

Note: If a previously installed device cannot be automatically updated, the install program will prompt you to delete the existing device driver, and will then install the new driver.

7. If you are prompted to delete the existing device driver, follow this procedure:
 - a. Touch or click the **Printers & Faxes** button.
 - b. In the *Printers and Faxes* window, select the devices whose drivers you want to delete.
 - c. Select the *File* menu and the **Delete** option.
 - d. Close the *Printers and Faxes* window.
8. When you're ready to proceed with the device updates, touch or click **Next**.

Note: During this process, the install program will update existing devices and install the new ones you selected. Your screen may change several times as each driver is installed.

Note: When installation is complete, the **InstallShield Wizard** will display a message asking if you want to restart your computer. You must restart your PC before using the *Design Center Software*.

9. To restart your PC now, click **Yes** and then click **Finish**. (If you click **No**, you must still click **Finish** to complete the installation process and restart your PC at a later time.)

Connecting the Cutout Maker to a PC



APPLIES TO:

- **New Install, Upgrade Install and Device-Only Install**
- **User PCs only**

The **VariQuest™ Design Center Software** makes it easy to install and use any of the **VariQuest™** output devices. Most of the devices can be connected to your PC without requiring any additional steps. Whenever you first connect the Cutout Maker to a specific USB port, however, you will need to take a few steps in the Windows® **Found New Hardware Wizard**.

Note:The wizard will also appear if you connect the Cutout Maker to a different USB port than previously used on the same computer.

1. After you connect the Cutout Maker's cable to a USB port on your PC, the **Found New Hardware** window will appear with three choices. Click the bottom choice — **No, not this time** — and then click **Next**.
2. If your *Design Center Software* CD is not already in your PC's CD-ROM drive, insert it when prompted.
3. On the same screen, click the second option — *Install from a list or specific location (Advanced)* — and then click **Next**.
4. When prompted to choose your search and installation options, select the top option — **Search for the best driver in these locations** — and then click the option **Search removable media (floppy, CD-ROM...)**.
5. Click **Next** to begin the installation.
6. In the *Completing the Found New Hardware Wizard* screen, click **Finish**.

Note:For other **VariQuest™** output devices, Windows® will automatically install the drivers. You may momentarily see Windows "balloons" in the lower right corner of your screen indicating that the hardware has been found and installed.

Adding VariQuest™ Devices after Initial Installation



APPLIES TO:

- **Device-Only Install**
- *Both DC1000s and User PCs*

You can always add more **VariQuest™** devices after the software is installed. To add another device:

1. Insert the **VariQuest™ Design Center Software** CD into the **internal** CD-ROM drive of your PC or DC1000. The setup program should start up automatically. If it doesn't:
 - a. Open your Windows® **Start** menu and click **Run...**
 - b. In the *Open* text box, type: **D:\variquestinstaller.exe** where “D” = your CD-ROM drive.
 - c. Click **OK**.
2. In the installation menu, touch or click **Device-Only Install**.
3. From the list that appears on the *Select Printer* screen, touch or click to highlight the device you are adding.
4. Touch or click **OK**. The **Printer Setup** program will install the device you selected in step 3.
5. After installing the new device, the **Printer Setup** program will display a message asking if you want to reboot your PC now. Select **Yes**, and click **Finish**.

Note: You can choose to reboot later, but you will not be able to use your newly installed device until your PC has been rebooted.

Using the DC1000 with a PosterPrinter 3000 & Parallel Connection



APPLIES TO:

- **New Install, Upgrade Install, and Device-Only Install**
- **DC1000s only**

The **VariQuest™ Design Center 1000** Touch Screen (DC1000) is configured by default to connect to **VariQuest™ PosterPrinter 3000** series printers via a USB connection. If your printer is not equipped with a USB connector, you will need to configure your DC1000 to connect to the printer via a parallel (LPT) connection.

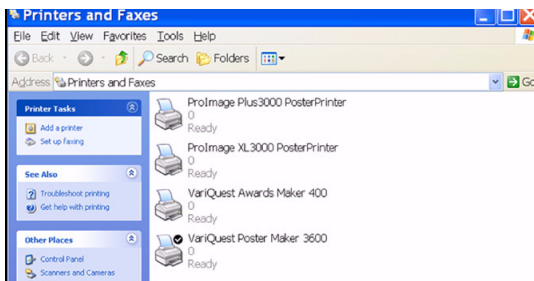
1. On the DC1000 Touch Screen, close the *Design Center Software* if it is currently running: Select the **Exit** tab, then choose **Close VariQuest Software**.
2. Physically connect the printer to your DC1000 and turn it on. Windows® will recognize the new device and launch the **Found New Hardware** wizard. Select **Cancel** to quit that wizard — it is not needed for your printer.

Note:The **Found New Hardware** wizard may take some time to appear. Regardless of when it appears, be sure to cancel out of the wizard.

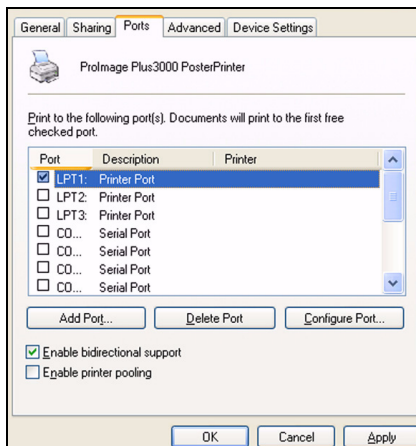
3. Open the *Start* menu and touch **Settings**, then **Printers and Faxes**.
4. In the *Printers and Faxes* window, select your PosterPrinter device.

Note:If your printer indicates **Offline**, check the printer status. In the **Printers and Faxes** window, select your PosterPrinter device to open the printer dialog window.

5. Touch **Printer** and then **Use Printer Online**. When the status changes to **Ready**, the printer is ready to be used.



6. Select the **File** menu, then **Properties**.
7. In the printer *Properties* dialog box, select the **Ports** tab.



8. Choose the LPT port to which you connected the printer in Step 2, then click **OK** to close the printer *Properties* dialog box.
9. Close the *Printers and Faxes* window.
10. Restart the **VariQuest™ Design Center Software** by touching the **VariQuest™** icon on the DC1000 desktop.

**Copyright 2008 Brady Worldwide, Inc.
All Rights Reserved
Y924219 Rev A
BRADY WORLDWIDE, INC.
6835 Winnetka Circle, Brooklyn Park, MN 55428
Phone (763) 536-6400**

