

# GalaRio™ Template Gallery Quick Install Guide

*Warning: Do not connect your printer to the PC until instructed.*

## VisiMate® System, PosterPrinter System™ & GalaRio™ Template Gallery

You will need the following items:

- GalaRio 2.2 CD-ROM
- USB Cable
- PosterPrinter System Driver (only if you are installing a new PosterPrinter System)

### VisiMate® Specialty Printing System, PosterPrinter™ System & GalaRio™ Template Gallery

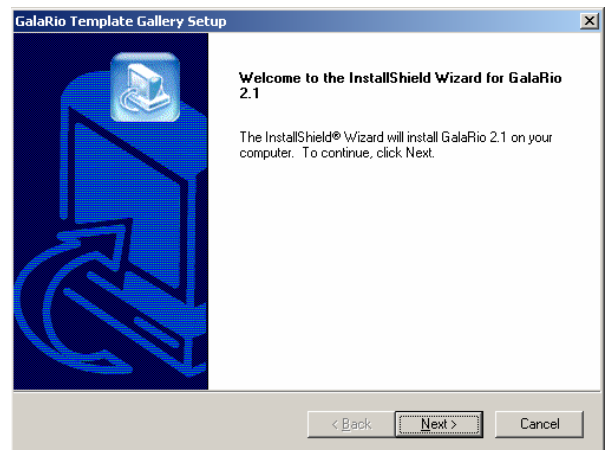
1. Install the PosterPrinter System driver following the Quick Installation Guide for USB included with the interface kit.

**Note:** Do not restart your computer after installing your PosterPrinter driver.

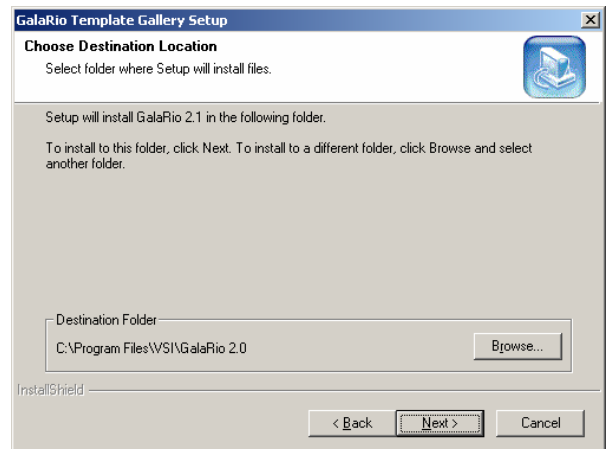
2. Insert the GalaRio 2.2 CD into your CD-ROM.



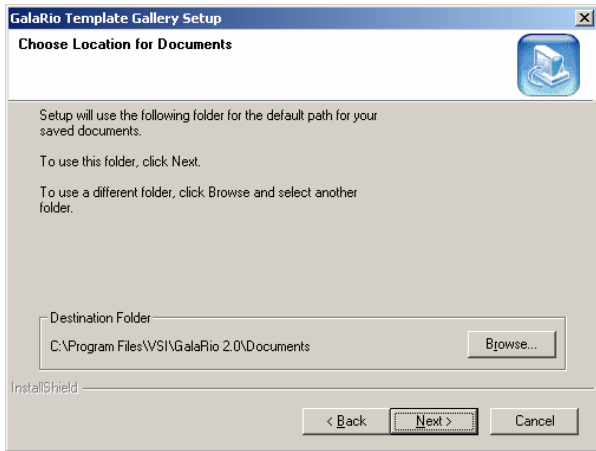
3. Select both check boxes "Install GalaRio Template Gallery" and "Install VisiMate print driver". Then select "Start".



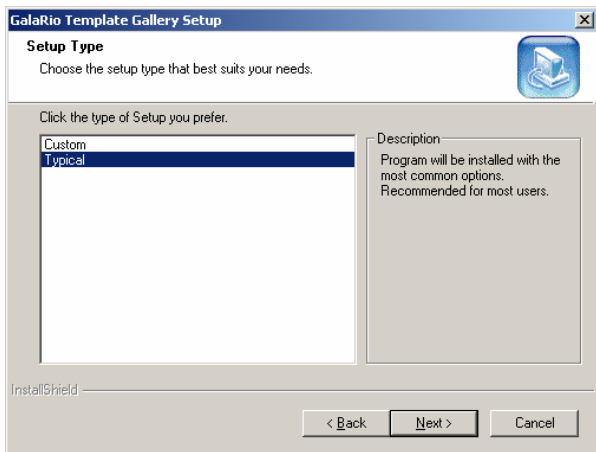
4. Select "Next" to continue.



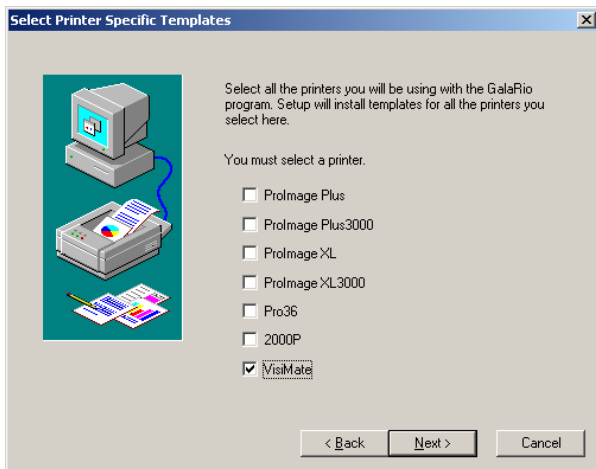
5. Select "Next" to continue.



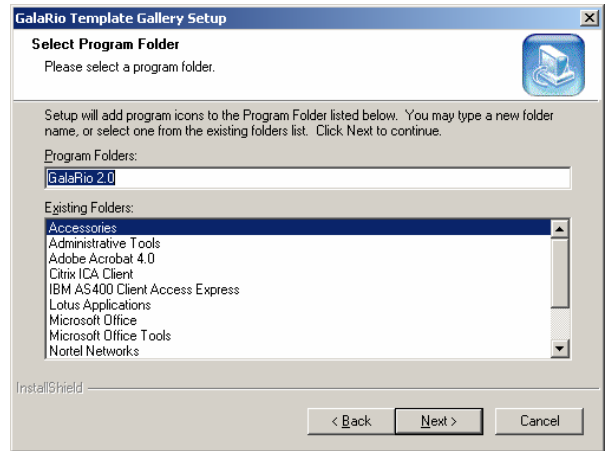
6. Select "Next" to continue.



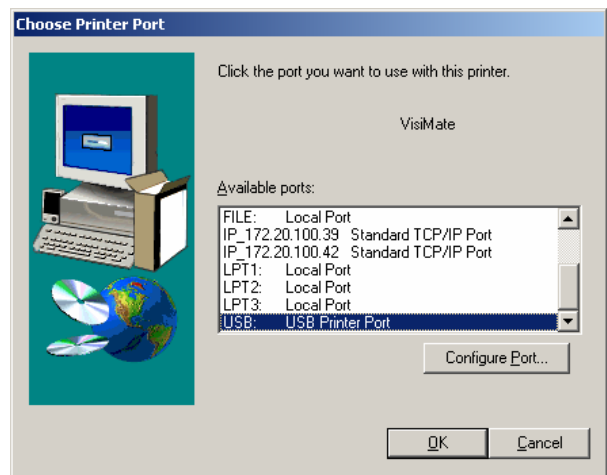
7. Select "Next" to continue.



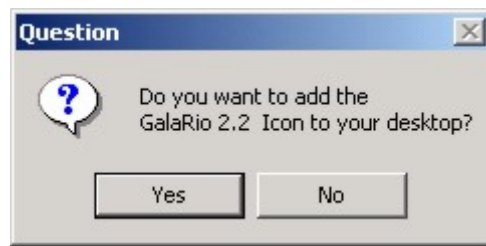
8. Select the "VisiMate" check box and the appropriate PosterPrinter™ System and select "Next" to continue.



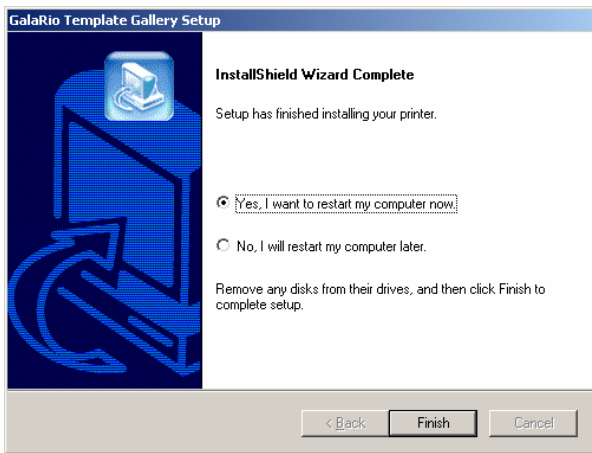
9. Select "Next" to continue.



10. Scroll down and highlight the "USB: USB Printer Port". Select "OK".



11. Select "Yes".



12. Select "Finish" to restart the PC.
13. Right click on the Windows® "Start" button in the lower left hand corner.
14. Select "Explore" and click on the CD Drive.
15. Double click on "Banner Page Sizes" Folder.
16. Choose the appropriate Windows Operating System for your PC and double-click on the file titled "XLPlus2000", "XLPlusNT4" or "xlplus98", "XLPlusXP".
17. Select "Yes" and "OK" when prompted.

**Note:** You must have administrative rights to complete this task.

18. Now, connect the VisiMate System to your computer using the USB cable provided and turn the printer on.
19. Refer to pages 4-6 to complete the USB Driver installation.
20. To set up the PosterPrinter for USB, restart the PC and follow the instructions in step 21 for your operating system on the following page.

21. Find your installed operating system below and follow the instructions to configure the PosterPrinter™ System for USB.

- a. Windows 98
  - I. Click "Start→Settings→Printers"
  - II. Right click the FUJIFILM PP3000 or FUJIFILM PP3000WIDE icon and click on "Properties"
  - III. Click on the "Details" tab and change the "Print to the following port" dropdown box to "USB00x Virtual printer port"
- b. Windows 2000
  - I. Click "Start→Settings→Printers"
  - II. Right click the FUJIFILM PP3000 or FUJIFILM PP3000WIDE icon and click on "Properties"
  - III. Click on "Ports" and change the port to "USB00x Virtual printer port"
- c. Windows XP
  - I. Click "Start-->Control Panel-->Printers and Faxes"
  - II. Right Click the FUJIFILM PP3000 or FUJIFILM PP3000WIDE icon and click on "Properties"
  - III. Click on "Ports" and change the port to "USB00x Virtual printer port"

# VisiMate® Specialty Printing System USB Driver Installation

Find your installed operating system below and follow the instructions to complete the USB Driver installation.

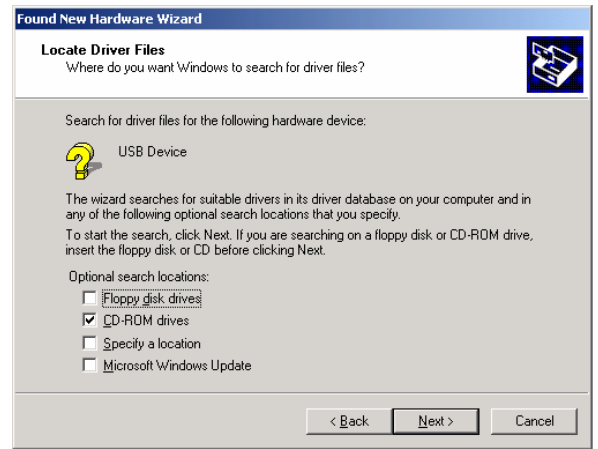
## Follow these steps for Windows® 2000



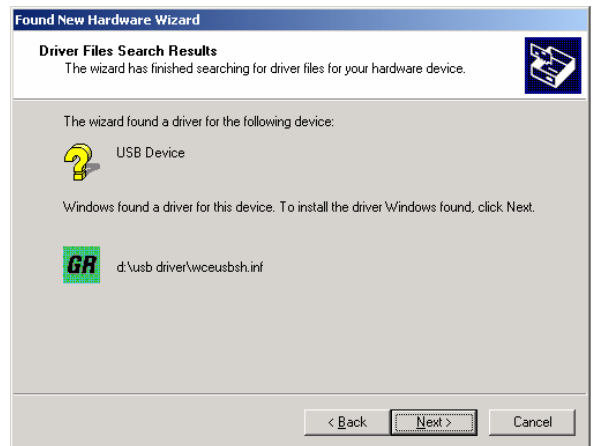
1. Select "Next" to continue.



2. Select "Next" to continue.



3. Check the CD-ROM box only and select "Next".

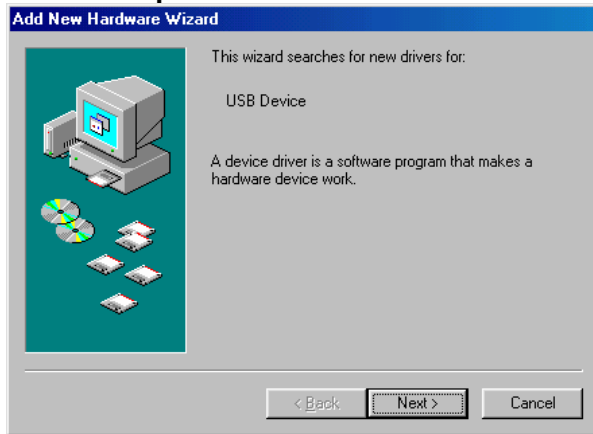


4. Select "Next" to continue.



5. Select "Finish".

## Follow these steps For Windows® 98SE



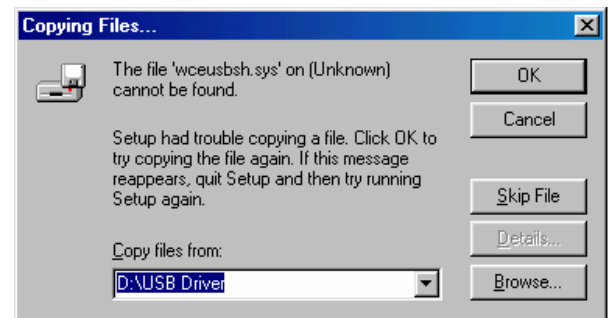
1. Select "Next" to continue.



4. Select "Next" to continue.



2. Select "Next" to continue.



5. Type in your CD-ROM drive letter and then : \USB Driver. Select "OK" to continue.

**Example:** D: \USB Driver



3. Select the "Specify a location" check box only. Type in your CD-ROM drive letter and then : \USB Driver. Select "Next" to continue.

**Example:** D: \USB Driver



6. Select "Finish".

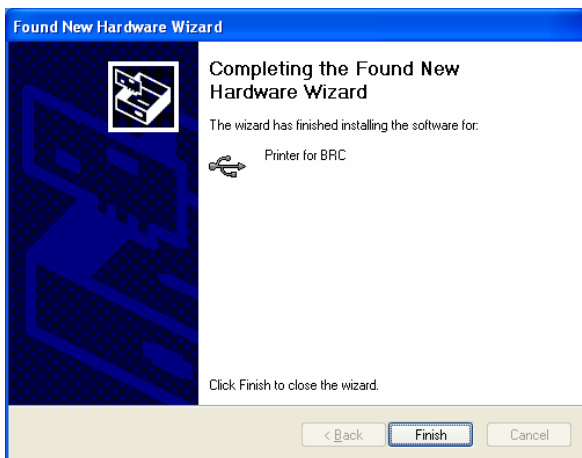
## Follow these steps For Windows® XP



1. Select "Next" to continue.



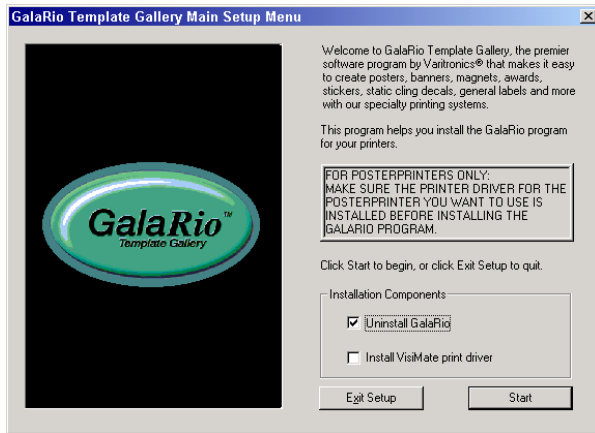
2. Select "Continue Anyway".



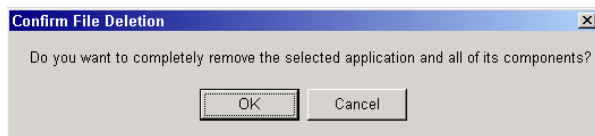
3. Select "Finish".

## Uninstall GalaRio™ Template Gallery

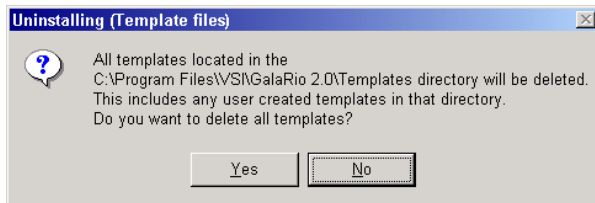
1. Insert the GalaRio CD into the CD Rom drive.



2. Check Uninstall GalaRio and select "Start" to continue.



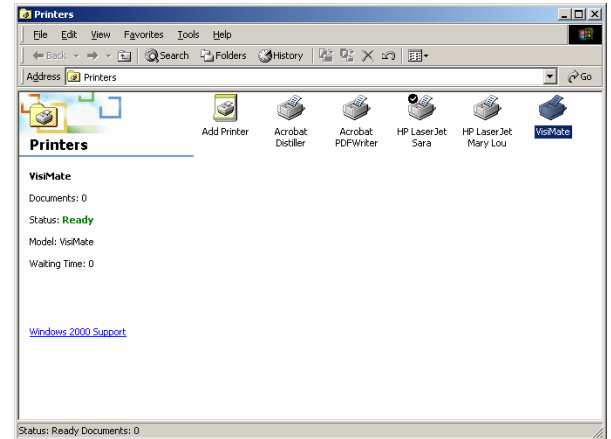
3. Select "OK".



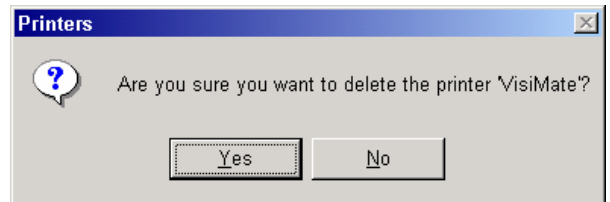
4. Select "Yes". The PC will remove the application, template directory and return to Windows® desktop screen.

## Remove Printer Drivers

1. Click on Windows **Start-->Setting-->Printers** to remove any/all Varitronics® printer drivers.



2. Highlight the installed Varitronics® printer icons and press the "Delete" key on the keyboard.



3. Select "Yes".
4. Restart the PC.