

Installation Guide

CONTENTS

<i>Important Notes for DC1000 Users</i>	2
<i>Getting Started</i>	3
<i>Installing the Design Center Software on a PC</i>	4
<i>Upgrading the Design Center Software</i>	6
<i>Connecting VariQuest™ Devices to a PC</i>	7
<i>Adding VariQuest Devices after Initial Installation.</i> . . .	9
<i>Using the DC1000 with a PosterPrinter 3000 & Parallel Connection</i>	10



Important notes for DC1000 users

For NEW Users:

- If you have just acquired the **VariQuest™ Design Center 1000** Touch Screen system (DC1000), you do **not** need to install the software provided on this CD before using the system. All software, drivers, and utilities have already been loaded on the DC1000 for you.

For EXISTING Users:

- If you already have a DC1000 and want to either upgrade to the latest version or add a **VariQuest™** device to your DC1000, use the accompanying CD to install the upgrade/addition.

FOR ALL USERS:

Insert the **VariQuest™ Design Center Software** CD into the CD-ROM drive of your PC or DC1000.

Getting Started

The **VariQuest™ Design Center Software** is one component of the **VariQuest™ Visual Learning Tools** product line, which supports school staff members and volunteers in creating materials that help improve student and staff performance.

The software CD that accompanies this guide performs a number of tasks, depending on the machine you use for the software, and whether the software is a new or an existing installation. This **Installation Guide** steps you through each of these tasks.

To determine which sections meet your specific requirements, use the following chart, which lists:

- Each **procedure** in this guide.
- Which **install type** the procedure is for: new (first-time) software installations, upgrades, or adding an output device.
- Which **machine type** you use to run the *Design Center Software*—the dedicated **VariQuest™ Design Center 1000 Touch Screen (DC1000)**, or your PC

When to Use the *Installation Guide* Procedures

Procedure	Install Type	Machine Type
<i>Installing the Design Center Software on a PC</i> , page 4	New Install	User PCs
<i>Upgrading the Design Center Software</i> , page 6	Upgrade Install	DC1000s User PCs
<i>Connecting VariQuest™ Devices to a PC</i> , page 7	New Install Upgrade Install Device-Only Install	User PCs
<i>Adding VariQuest™ Devices after Initial Installation</i> , page 9	Device-Only Install	DC1000s User PCs
<i>Using the DC1000 with a PosterPrinter 3000 & Parallel Connection</i> , page 10	New Install Upgrade Install Device-Only Install	DC1000s

Installing the Design Center Software on a PC



APPLIES TO:

- **New Install only**
- **User PCs only**

Depending on whether you have an existing version of the *Design Center Software* installed on your PC, the installation program will perform either a new, full install or an upgrade install. The following steps apply to a **new installation**. (See “*Upgrading the Design Center Software*” on page 6 for the steps needed in an upgrade.)

1. Insert the **VariQuest™ Design Center Software** CD into the CD-ROM drive on your PC. If the setup program does not start:
 - Open your Windows® **Start** menu and click **Run....**
 - In the *Open* text box, type: **D:\variquestinstaller.exe** where “**D**” = your CD-ROM drive.
 - Click **OK**.
2. On the *Design Center Software* welcome screen, click **New Install**.



TIP

The setup program will install Microsoft.NET framework if it is not installed on your PC. When done, you will be prompted to restart your PC. Then continue with step 3.

3. On the **InstallShield Wizard** screen, click **Next**.
4. On the **License Agreement** screen, read the agreement (use scroll bar to read the entire text). If you agree, click **Yes**.
 - If you click **No**, you will not be able to continue.
 - If you click **Back**, you will be returned to the previous screen.
 - To print out the entire agreement, click **Print**.
5. On the **Select Options** screen, click the checkbox next to each **VariQuest™** and Poster Maker output device you want to connect to your system.
6. When done, click **Next**.
7. The *Choose Destination Location* screen displays the destination folder (recommended) where the files will be installed. To change the location, click **Browse**, then select a different folder. Click **Next** to continue.
8. The *Start Copying Files* screen displays the output devices you selected earlier. If the list is accurate, click **Next** to continue. (To add or remove items from the list, click **Back**.)
The installation process begins, and a progress bar will display on the *Setup Status* screen while installing.
9. The *Printer Setup* program will install each of the devices you selected in step 5.



TIP

When installation is complete, a prompt will display asking if you want to restart your computer. You must restart your PC before using the Design Center Software.

10. To restart your PC now, click **Yes**, then click **Finish**. (If you click **No**, you must still click **Finish** to complete the installation process and restart your PC at a later time.)
11. After the software and all device drivers are installed, launch the *Design Center Software* and perform a one-time procedure to complete the initial installation tasks. See the **VariQuest™ Design Center Software User's Guide** for instructions on launching the software and completing the initial setup.

Upgrading the Design Center Software



APPLIES TO:

- **Upgrade Install only**
 - **Both DC1000s and User PCs**
-

This procedure steps you through the process of upgrading your existing *Design Center Software* to a newer version.

1. Close all open **VariQuest™** software applications and disable your screensaver, if active.
2. Insert the **VariQuest™ Design Center Software** CD into the CD-ROM drive. If the program does not start automatically:
 - a. Open your Windows® **Start** menu and click **Run...**
 - b. In the *Open* text box, type: **D:\variquestinstaller.exe** where “**D**” = your CD-ROM drive.
 - c. Click **OK**.
3. From the *Design Center Software* welcome screen, touch or click **Upgrade Install**. The *InstallShield Wizard* launches.



TIP

Depending on your configuration, Windows may automatically run updates to some of its components.

4. If prompted, click to install the Microsoft components and follow the prompts.



TIP

If Microsoft .NET Framework is installed, you will have to restart your DC1000 or PC. If a restart was required, repeat Step 3, then continue with Step 5.

5. After the reboot, touch or click **OK** if prompted to install any additional Microsoft components and follow the prompts.

- When all Microsoft components are installed, touch or click **OK** again to automatically start the **VariQuest™ Design Center Software** upgrade installation.
- Follow the prompts in the upgrade to complete the installation.

 **TIP**

The install program upgrades your existing software and databases. A progress bar displays during the upgrade. Please be patient—the process could take some time as all databases are updated.

Connecting VariQuest™ Devices to a PC



APPLIES TO:

- **New Install, Upgrade Install and Device-only Install**
 - **User PCs only**
-

Windows XP Installations

Most devices can be connected to your PC with no additional steps. However, when you first connect the Cutout Maker to a USB port, you will need to use the **Found New Hardware Wizard**.

 **TIP**

The wizard also appears if you connect the Cutout Maker to a USB port different than the one previously used.

- From the *Design Center Software* CD, select **Device-Only Install**.
- At the prompts, click **OK** and then **OK** again.
- Connect the Cutout Maker's cable to a USB port on your PC.

 **TIP**

Windows will automatically start to install the USB driver in the background.

4. In the *Found New Hardware* window, click **No, not this time**, then click **Next**.
5. Click **Automatically install driver (Recommended)**, then click **Next**. The wizard installs the driver for the Cutout Maker.
6. In the *Completing the Found New Hardware Wizard* screen, click **Finish**.



TIP

For other VariQuest™ output devices, Windows® will automatically install the drivers.

Windows® Vista and Windows® 7 Installations

1. Connect the output device cable to a USB port on your PC. Windows will automatically detect and install your device driver.
2. If Windows cannot find the driver, insert your *Design Center Software* CD into the CD-ROM drive of your PC when prompted.



TIP

*Be sure to do the next two steps in the order presented. You **must** click OK before clicking Restart Now!*

3. In the *Windows Installation Complete* window, click **Restart Now**.
4. **Vista only:** Restart your PC.

Adding VariQuest™ Devices after Initial Installation



APPLIES TO:

- **Device-only Install**
 - *Both DC1000s and User PCs*
-

You can always add more **VariQuest™** devices after the software is installed. To add another device:

1. Insert the **VariQuest™ Design Center Software** CD into the CD-ROM drive of your PC or DC1000. If the setup program does not start automatically:
 - a. Open your Windows® **Start** menu and click **Run...**
 - b. In the *Open* text box, type: **D:\variquestinstaller.exe** where “**D**” = your CD-ROM drive.
 - c. Click **OK**.
2. In the installation menu, touch or click **Device-Only Install**.
3. On the *Select Printer* screen, touch or click to highlight the device you are adding.
4. Touch or click **OK**. The *Printer Setup* program will install the device you selected in step 3.
5. Repeat Steps 3 and 4 for each device you want to install.
6. After installing the new device, the *Printer Setup* program will display a message asking if you want to reboot your PC now. Select **Yes**, then click **Finish**.



TIP

You can choose to restart later, but you will not be able to use your newly installed device until your PC has been restarted.

Using the DC1000 with a PosterPrinter 3000 & Parallel Connection



APPLIES TO:

- **New Install, Upgrade Install, and Device-Only Install**
 - **DC1000s only**
-

The **VariQuest™ Design Center 1000** Touch Screen (DC1000) is configured by default to connect to **VariQuest™ PosterPrinter 3000** series printers via a USB connection. If your printer is not equipped with a USB connector, you will need to configure your DC1000 to connect to the printer via a parallel (LPT) connection.

1. On the DC1000 Touch Screen, close the *Design Center Software* if it is currently running: Select the **Exit** tab, then choose **Close VariQuest Software**.
2. Physically connect the printer to your DC1000 and turn it on. Windows® will recognize the new device and launch the **Found New Hardware** wizard. Select **Cancel** to quit that wizard — it is not needed for your printer.



TIP

*The **Found New Hardware** wizard may take some time to appear. Regardless of when it appears, be sure to cancel out of the wizard.*

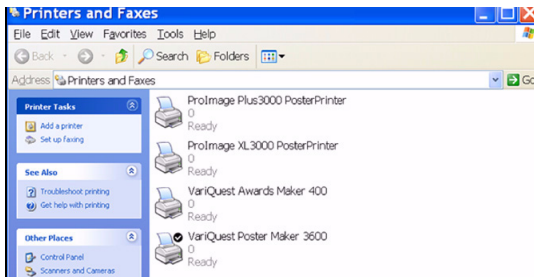
3. Open the *Start* menu and touch **Settings**, then **Printers and Faxes**.
4. In the *Printers and Faxes* window, select your Poster Maker device.



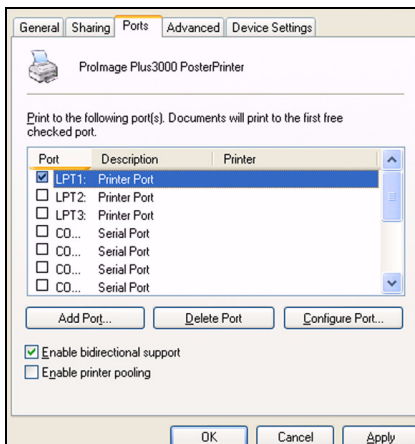
TIP

*If your printer indicates **Offline**, check the printer status. In the **Printers and Faxes** window, select your Poster Maker device to open the printer dialog window.*

5. Touch **Printer** and then **Use Printer Online**. When the status changes to *Ready*, the printer is ready to be used.



6. Select the **File** menu, then **Properties**.
7. In the printer *Properties* dialog box, select the **Ports** tab.



8. Choose the LPT port to which you connected the printer in Step 2, then click **OK** to close the *Properties* dialog box.
9. Close the *Printers and Faxes* window.
10. Restart the **VariQuest™ Design Center Software** by touching the **VariQuest™** icon on the DC1000 desktop.

Copyright 2011 Brady Worldwide, Inc.
All Rights Reserved
Y134593 Rev A
BRADY WORLDWIDE, INC.
2355 Polaris Lane N, Plymouth, MN 55447
Phone (763) 536-6400

